
AN_How to use focus tool
Application Notes

Version <1.0>



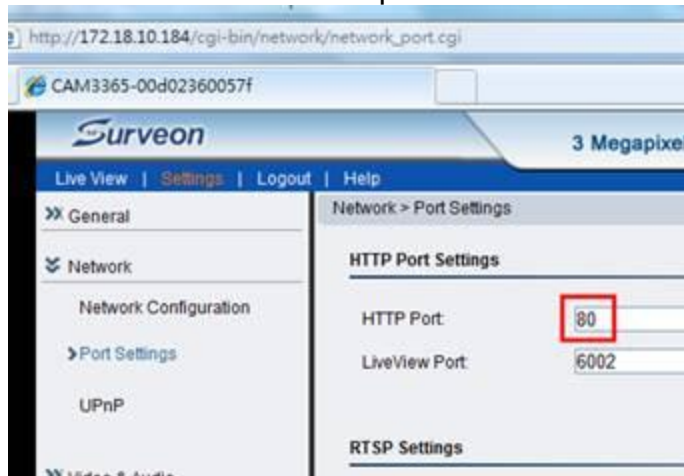
Technical Support Team

Preface

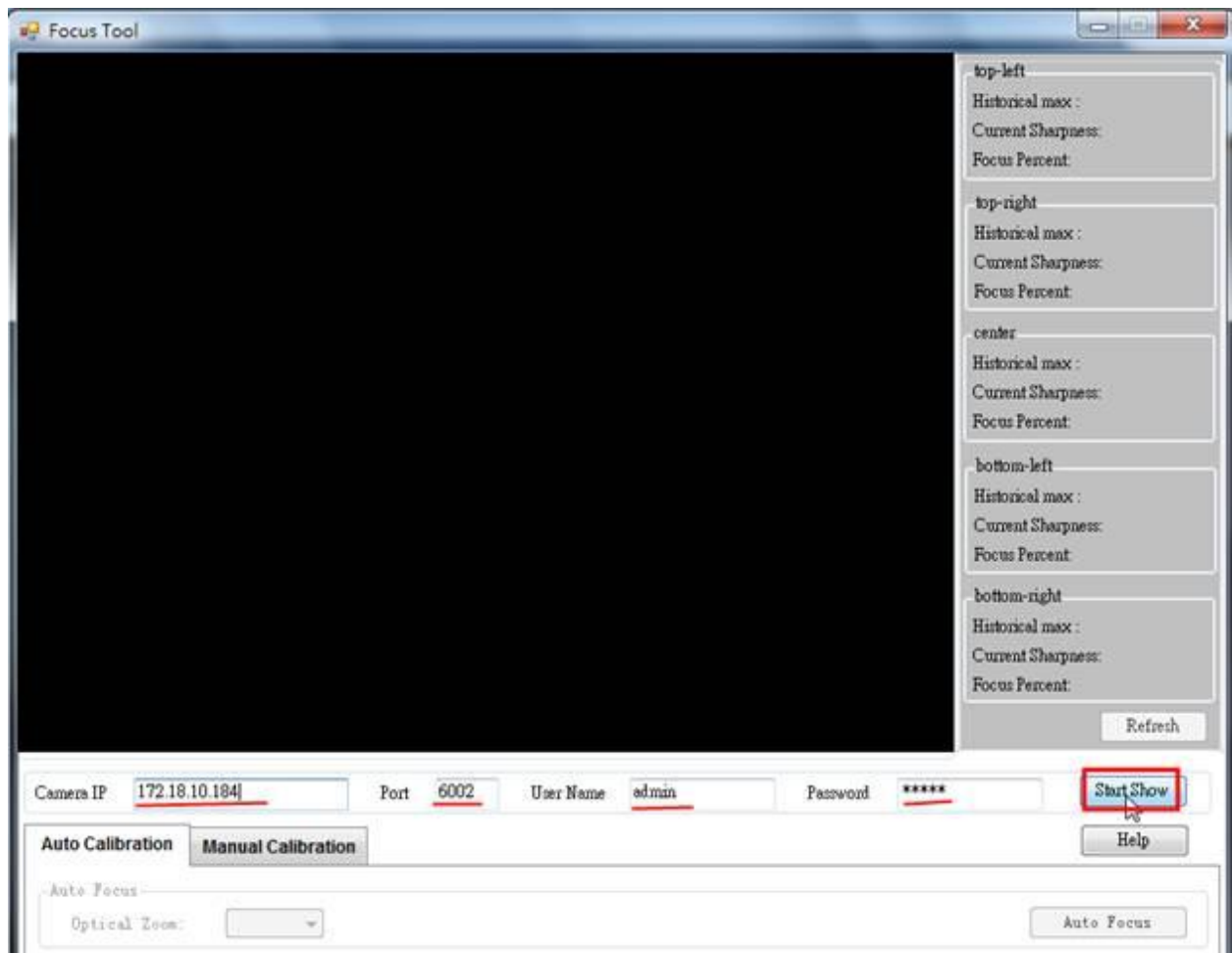
For CAM3365/4365/4360, since it is remote focus, so user needs to adjust the focus from the IE browser when install the camera in the field site. In order to save the focus setting into the camera EEPROM memory, Surveon provide the focus tool to help user adjust the focus setting and save to the EEPROM.

Procedures

1. Make sure camera HTTP port is 80.



2. Download **Focus Tool2.1.0.2.rar** via this URL <http://goo.gl/u6fOi>
3. Unzip the file then click **AutoFocusTool.exe**.
4. Input **Camera IP**, **Port:6002** (camera Liveview port), **Camera User Name**, **Password**, and click **Start Show** to show the real-time image.
5. After clicking **Start Show** button, the tool will automatically do **Auto Focus** for about 30 seconds.



6. After auto focus is done, click **Manual Calibration** tab. Then you can start to adjust the focus manually.

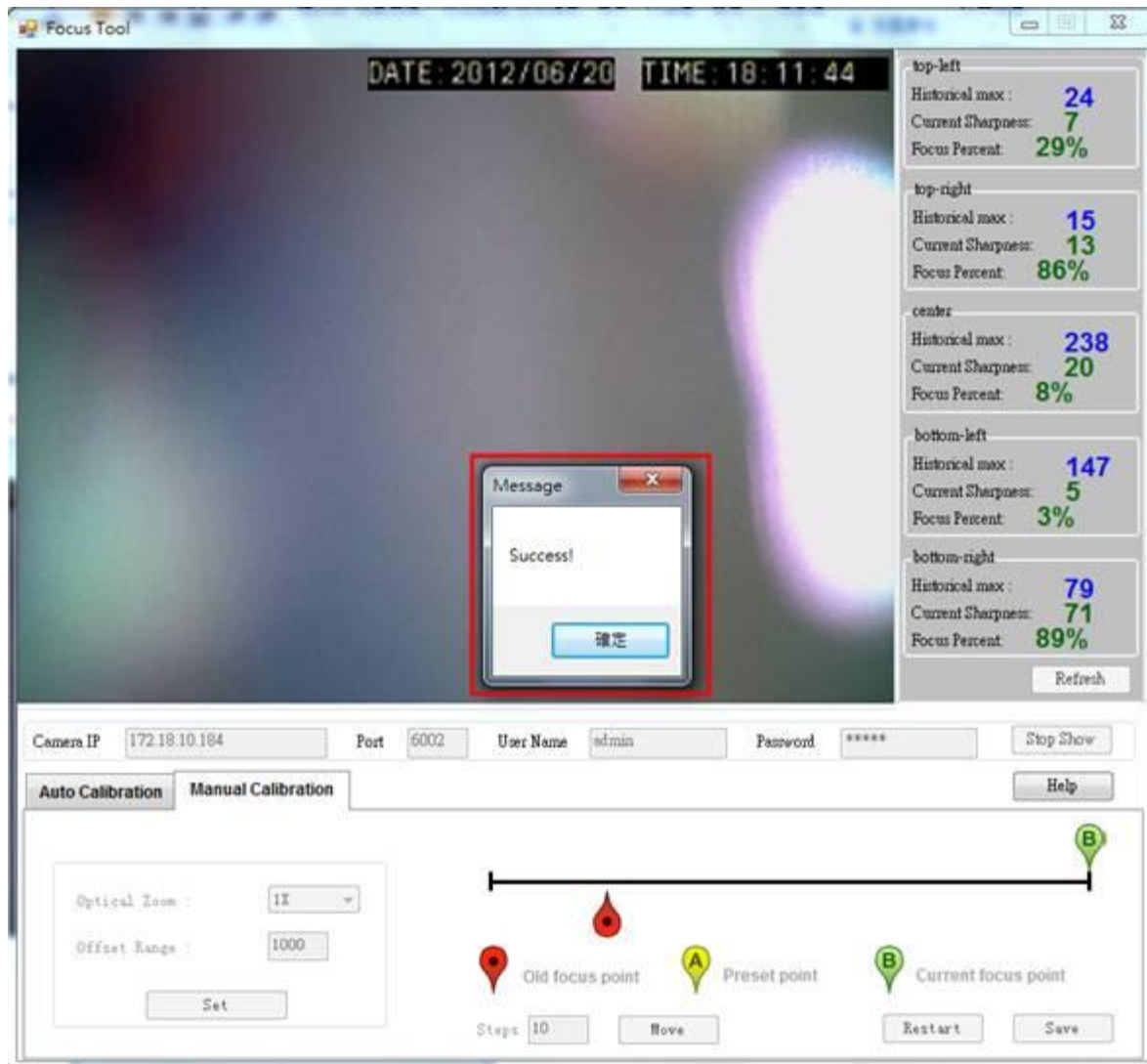
6.1 This tool can help customer to adjust focus for each zoom rate. So you can adjust focus from zoom rate 1x to 3x by selecting **Optical Zoom**.

6.2 You need to input the **Offset Range**, this value is to define the calibration range.

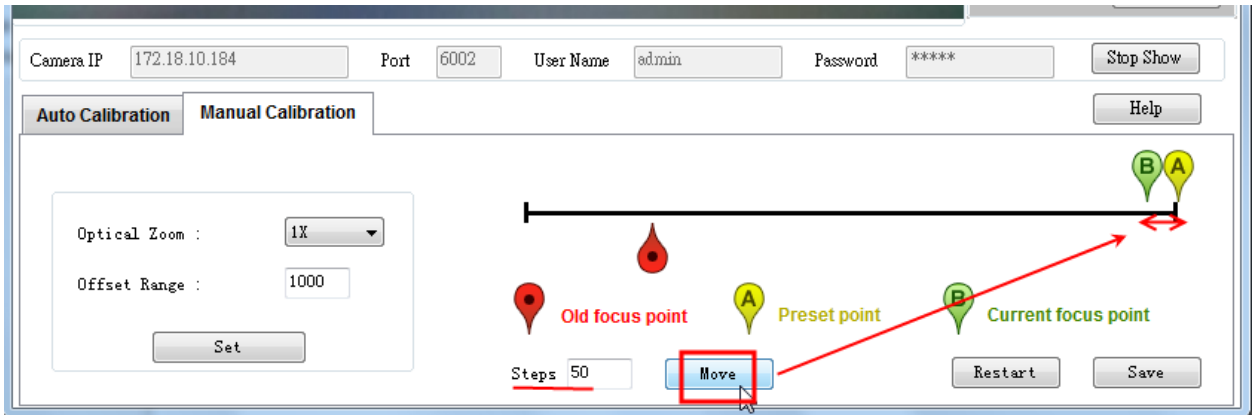
- If the focus is lost much, the value should be set to large number such as 1000.
- If the focus is lost less, the value should be set to small number such as 50.



7. After choosing optical zoom rate and setting the offset range, please click **Set** button and wait for while (about 15 seconds), the **Success** window will pop up.



8. If the image is not focused well, you may click **Move** button to adjust **Current focus point**.
9. You may change the value of **Steps** to adjust how much the current focus point will move by each clicking **Move** button.
 - 9.1 If the Offset Range is large (say 1000), the **Steps** should be set to a large number (say 100) for quicker calibration.
 - 9.2 If the Offset Range is small (say 50), the **Steps** should be set to a small number (say 10) for quicker calibration.



10. After you get the focused image, you may click **Save** button to save the setting.

10.1 If you want to restart calibration, you may click **Restart** button.

10.2 If you want to stop adjust this camera's focus, you may click **Stop Show** button.